



PROGRAM OPPORTUNITIES

TEC's Moderate Transition 2 Program

incorporates a flexible structure based on individual student needs and skills.

The program prepares students for further education, employment and independent living through:

- ◆ Career Development Activities
- ◆ Work-Based Learning Experiences & Internships
- ◆ Social & Recreational Opportunities
- ◆ Activities of Daily Living
- ◆ Learning Lab Apartment
- ◆ Functional Academics
- ◆ Community & Real World Settings

Post Program Outcomes:

- ◆ Competitive and supportive employment
- ◆ Work & live at home
- ◆ Shared living experience
- ◆ Adult day programs
- ◆ Continuing education opportunities
- ◆ Participation in community-based activities

The program is based at TEC's East Walpole main location.



**141 Mansion Drive
East Walpole, MA 02032**



For more information contact:

Susan Donelan

Director of Student Services
The Education Cooperative (TEC)
TEC Campus School
781-352-5706
sdonelan@tec-coop.org

Meredith Faletra

Program Coordinator
TEC Campus School
781-352-5726
mfalettra@tec-coop.org

Application to TEC Moderate Transition 2

Parents/Guardians should direct their application inquiry to the Special Education Administrator in their school district. Once the district approves the student as appropriate for a TEC Moderate Program, they will submit a referral packet to TEC for review; and TEC will contact the parent/guardian to schedule a program visit.

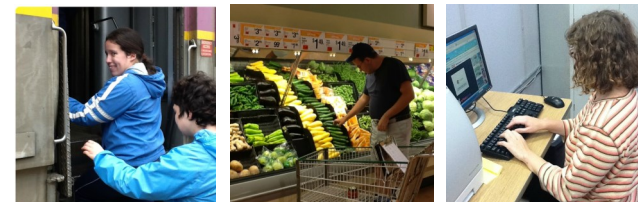


Printed by TEC Phoenix Academy Graphic Design

the education
COOPERATIVE

Together we create more possibilities

Moderate Transition 2 ~ School to Adult Life ~ Special Education Program



- ◆ A full-day, small classroom setting that provides off-campus, pre-vocational and community-based opportunities for students to prepare for their transition to adult life
- ◆ A highly supportive & engaging environment designed to meet each student's individual needs



The Education Cooperative (TEC)
141 Mansion Drive
East Walpole, MA 02032

781-352-5706 ~ www.tec-coop.org



SHARED VISION

At TEC, we believe in the potential of each individual . . .

Our Moderate Transition 2 program provides real-world learning opportunities and individualized support to help students shape their lives, understand their unique capabilities, and take an active role in preparing to accept the responsibilities of being an adult.

Our talented, experienced and caring educators work as an integrated team with the family and student to define and embrace their dreams and goals, take control of their lives and be actively involved in their own learning process to reach their full potential.

Individual Learning Path:



TEC provides a supportive environment that includes:

- ◆ Individualized instruction in academic, social, functional and vocational skills while modeling appropriate adult behavior and responsibilities.
- ◆ Focused instruction based on achieving the most independent, post-secondary living and working experience possible for each student.
- ◆ A person-centered planning process to help students paint the picture of who they are and what they want.



PROGRAM DESCRIPTION

Our Students:

- ◆ Ages 18 –22 (flexible, based on student needs)
- ◆ Students seeking to maximize their potential for independent living

Disabilities Supported:

- ◆ Autism
- ◆ Communication
- ◆ Intellectual Disability
- ◆ Emotional
- ◆ Intellectual

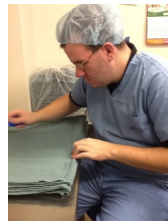


Program Components:

Our classrooms emphasize an *Integrated Related Services Approach* to maximize student learning involving a cross section of people, places, and situations.

Students are encouraged to assume emergent adult roles in their communities through:

- ◆ Life Skills
- ◆ Independent Living
- ◆ Employment
- ◆ Social Skills
- ◆ Technology Application

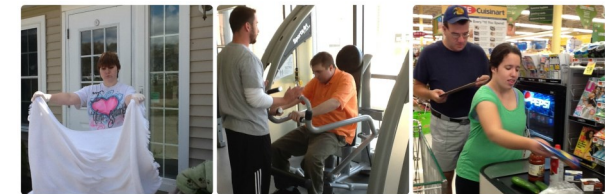


GUIDING PRINCIPLES

Potential ~ Growth ~ Pathways

The tools for empowering students to make decisions and to advocate for themselves include:

- ◆ Respecting students as adults
- ◆ Designing student-centered instruction
- ◆ Providing self-determined choices
- ◆ Increasing level of independence
- ◆ Developing self-advocacy strategies
- ◆ Minimizing reliance on others in making decisions and performing everyday activities
- ◆ Realizing positive adult outcomes post transition that are aligned to students' interests
- ◆ Promoting opportunities for realizing productive, and satisfying social, employment & independent living options



INTEGRATED RELATED SERVICES:

- ◆ Speech & Language Therapy
- ◆ Physical Therapy
- ◆ Occupational Therapy
- ◆ Adapted Physical Therapy
- ◆ Music Therapy
- ◆ Behavioral Consultation
- ◆ Vision Therapy/Consultation
- ◆ Nursing Services

